



WEATHER ULTRA FABRIC

## TECHNICAL INFORMATION

| Parameter           | Details  |
|---------------------|--|
| Composition         | 100% Spun Polyester  |
| Width               | 55"  |
| Abrasion            | In excess of 50,000 cycles (800g / 12Kpa)<br>Martindale                      |
| Fastness to Light   | 5+ [BS 1006 (1990)]  |
| Fastness to Rubbing | Wet: 5 Dry: 4.5  |
| Maintenance         | Professional cleaning is recommended   |
| Fabric GSM          | 370  |
| Colour Matching     | Batch to batch variations in shade may occur<br>within commercial tolerances |

## OPTIONAL TREATMENT

1. Flame Retardant Finish  
BS EN 1021 -1 : 1994 (Cigarette)  
BS 7176 : 1995 Low Hazard

2. Water Repellent  
AATCC - 118

### AS PER DYEING / PROCESS HOUSE DECLARATION

All Chemicals & Dyes  
Eco Friendly & It Is Not Harmful For Human Health

**ASADEEP FURNISHING PRIVATE LIMITED**  
MANGOL PURI INDUSTRIAL AREA, BA-19,  
PHASE-II, NORTH WEST DELHI



+ 91-7373 9292 38

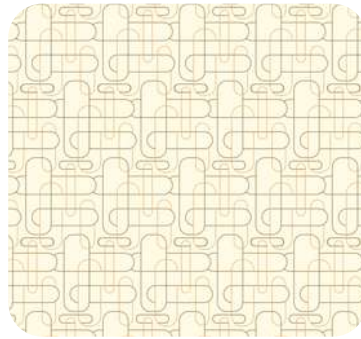


[www.asadeep.com](http://www.asadeep.com)

# WEATHER ULTRA FABRIC



WEATHER ULTRA 9001



WEATHER ULTRA 9002



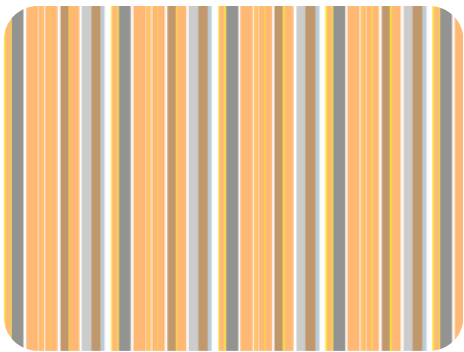
WEATHER ULTRA 9003



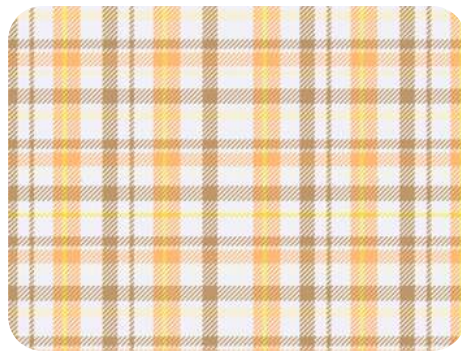
WEATHER ULTRA 9004



WEATHER ULTRA 9005



WEATHER ULTRA 9006



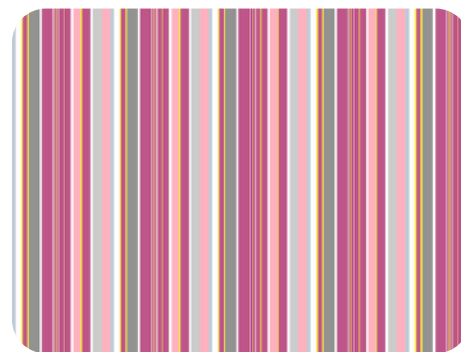
WEATHER ULTRA 9007



WEATHER ULTRA 9008



WEATHER ULTRA 9009



WEATHER ULTRA 9010



WEATHER ULTRA 9011



WEATHER ULTRA 9012



WEATHER ULTRA 9013



WEATHER ULTRA 9014



WEATHER ULTRA 9015



WEATHER ULTRA 9016



WEATHER ULTRA 9017



WEATHER ULTRA 9018



WEATHER ULTRA 9019



WEATHER ULTRA 9020



WEATHER ULTRA 9021



WEATHER ULTRA 9022



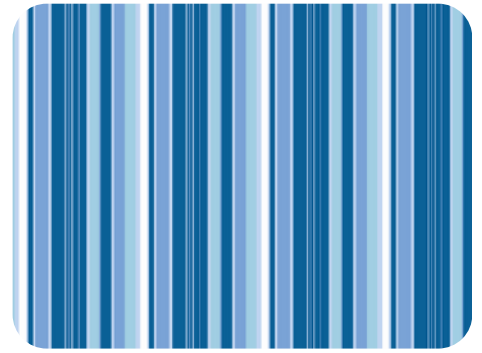
WEATHER ULTRA 9023



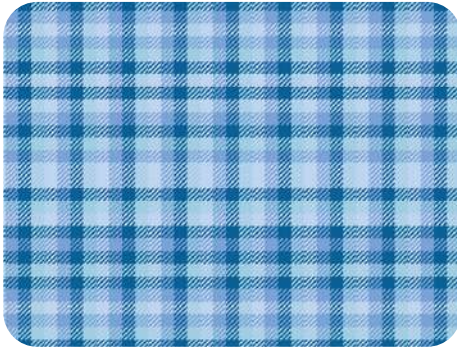
WEATHER ULTRA 9024



WEATHER ULTRA 9025



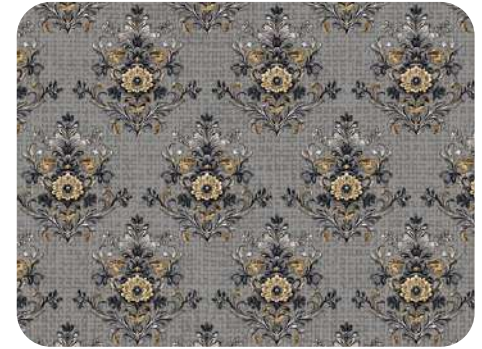
WEATHER ULTRA 9026



WEATHER ULTRA 9027



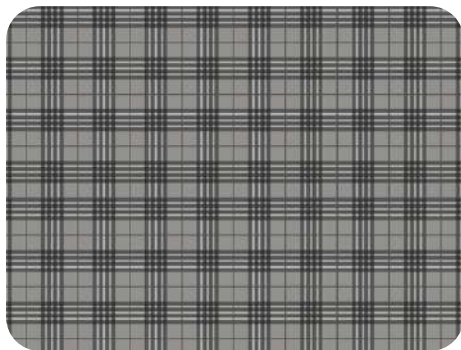
WEATHER ULTRA 9028



WEATHER ULTRA 9029



WEATHER ULTRA 9030



WEATHER ULTRA 9031



WEATHER ULTRA 9032



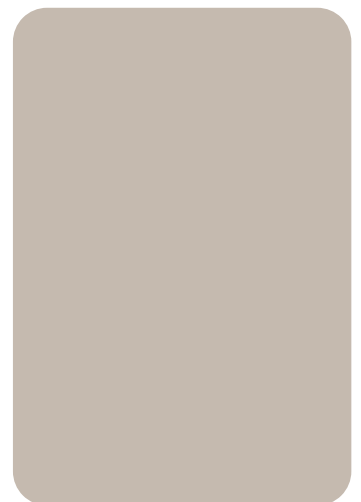
WEATHER ULTRA 9033



WEATHER ULTRA 9034



WEATHER ULTRA 9035



WEATHER ULTRA 9036

# WARRANTY



HIGH-PERFORMANCE INDOOR & OUTDOOR FURNISHING FABRIC

**PRODUCT NAME:** Weather Ultra

**COMPOSITION:** 100% Spun Polyester

**GSM:** 370

**WIDTH:** 55"

## PRODUCT INFORMATION

This warranty certificate is issued by Asadeep Furnishing Pvt. Ltd., and is applicable to the above-mentioned product, the warranty period is two (2) years from the date of purchase.

## WARRANTY CONDITIONS

This warranty is valid only if:

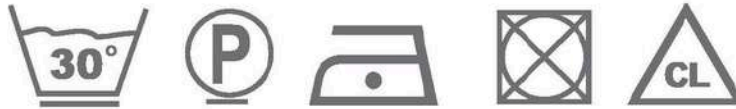
- The product is used in accordance with the instructions.
- The product is stored indoors during monsoon.
- The product is used under normal indoor or outdoor conditions.
- The product is properly maintained and cleaned.

## WARRANTY CLAIM PROCEDURE

To make a warranty claim, please contact Asadeep Furnishing Pvt. Ltd. at [infoasadeep@asadeep.com](mailto:infoasadeep@asadeep.com) or [asadeepinfo@gmail.com](mailto:asadeepinfo@gmail.com). You must provide us with the following information:

- Product code and serial number Purchase
- Date and proof of purchase
- Detailed description of the defect or damage

## MAINTENANCE AND CLEANING



Asadeep Furnishing Private Limited fabrics should be professionally dry-cleaned only. Do not wash with water or use detergent. Allow fabrics to air dry naturally. Do not use electric dryers or steam ironing. For sanitization, a diluted sodium hypochlorite (bleach) solution in water (1:4) may be used.

## 2 YEARS WARRANTY

Asadeep Furnishing Private Limited provides a 2-year limited warranty from the date of purchase. This warranty covers loss of colour and fabric strength caused by normal exposure to UV rays and general weather conditions. Damage due to misuse, improper care, or normal wear and tear is not covered.



## DISCLAIMER

This warranty certificate is only valid for the above-mentioned product and does not cover any other product. Asadeep Furnishing Private Limited is not responsible for any damage or defect that existed after the purchase or occurred during use.

**NOTE :** This fabric is suitable for both outdoor and indoor use. Warranty of up to 2 years against abnormal color fading under normal usage conditions.

-Made from outdoor fabric. Don't use detergent. Dry clean only.

## COMPANY INFORMATION

ASADEEP FURNISHING PRIVATE LIMITED

Address: BA-19, Mangolpuri Industrial Area Phase II, Delhi, 110034, India

Phone Number: +91 89209 47146, +91 62622 92953, +91 77038 80946 +91 62622 92957, 6262292918



# DISCLAIMER

*All fabric colours displayed in this catalogue are digitally rendered for reference purposes only. Due to variations in screen resolution, lighting conditions, and display settings, the actual fabric colour and texture may differ from what is shown.*

*We strongly recommend referring to the physical fabric sample or swatch before making any final purchase decision.*

**Please Note:**

- *The design scale and pattern representation may not be exact.*
- *No claims will be entertained for colour, texture, or design variations between the digital representation and the actual fabric.*

*-Asadeep Furnishing Private Limited*